



14 Wetherill Street, Leichhardt

Call 02 9818 2133 for inspection times.

Striking double fronted Victorian residence with commercial potential. On a rare 600sqm (approx.) block, this property offers great possibilities for a variety of commercial uses. Surrounded by quality homes, including others that are currently used for the purpose of business. Ideally located moments to Norton St & city buses. This property could be ideal for such businesses as a medical centre, child care facility or boarding house or others. **For more information please visit our website.**

SOLD

Contact Agent

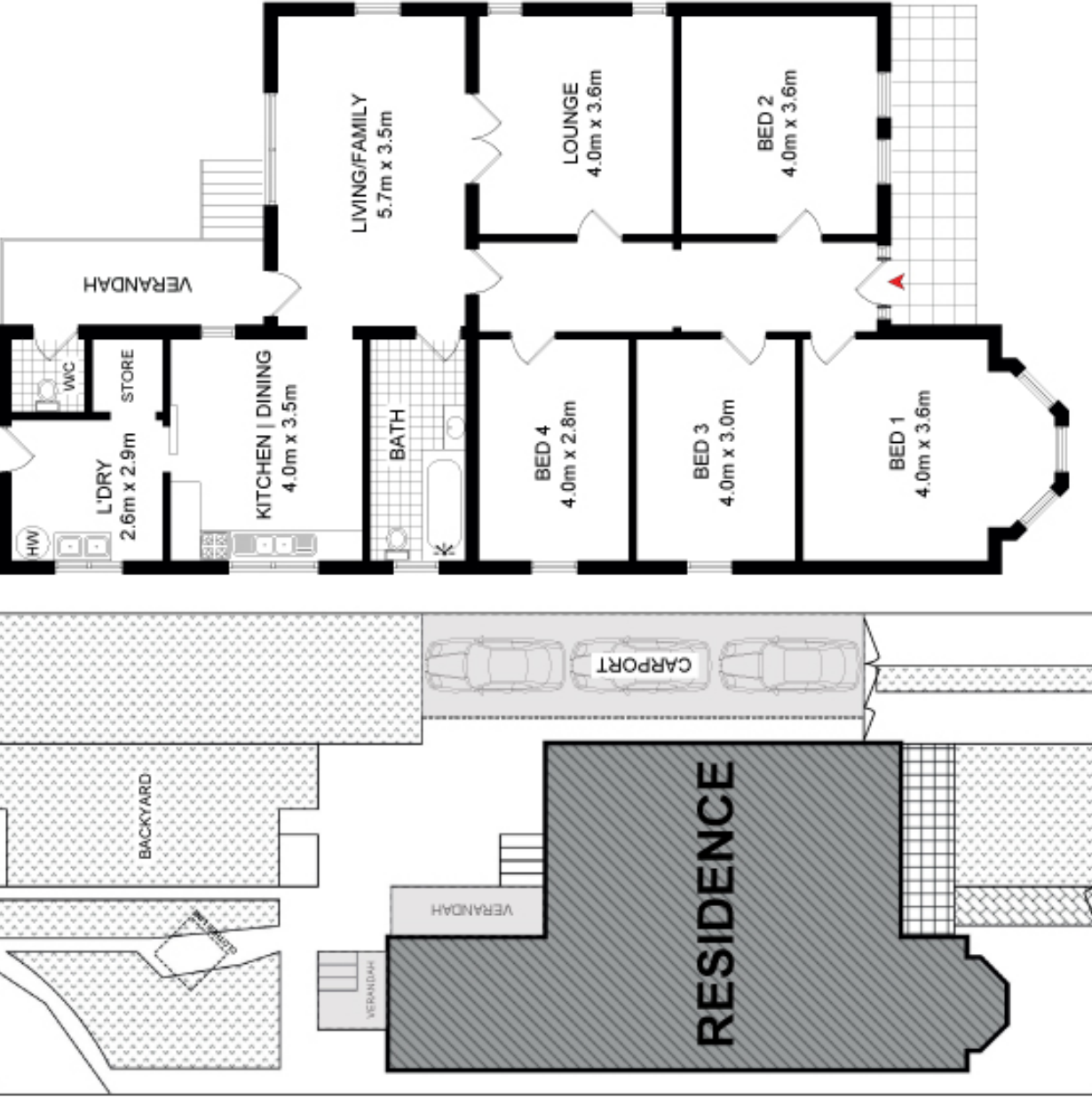


Harris Partners Real Estate

info@harrispartners.com.au

1300 42 77 47

<https://harrispartners.com.au>



SITE PLAN (not to scale)

14 WETHERILL STREET, LEICHHARDT

HARRISPARTNERS

DISCLAIMER: PLANS SHOWN ARE FOR PRESENTATION PURPOSES AND ARE NOT PART OF ANY LEGAL DOCUMENT. ALL MEASUREMENTS AND FIGURES ARE APPROXIMATE.