

7/9-11 Hathern St, Leichhardt

Call 02 9818 2133 for inspection times.

Modern spacious townhouse with parking. This residence, situated within a complex of smart townhouse style apartments, offers easy care interiors over two immaculate levels. Comprising a formal lounge, separate dining room, large kitchen and extensive wraparound courtyards for ultimate alfresco living. The upper floor houses three plush bedrooms and main bathroom. The master bedroom enjoys a private ensuite, while the second bedroom connects to a private balcony. This sleek contemporary home is positioned to be convenient to parklands, shopping and CBD transport and access. **For more information please visit our website.**



SOLD

Sold for \$699,000

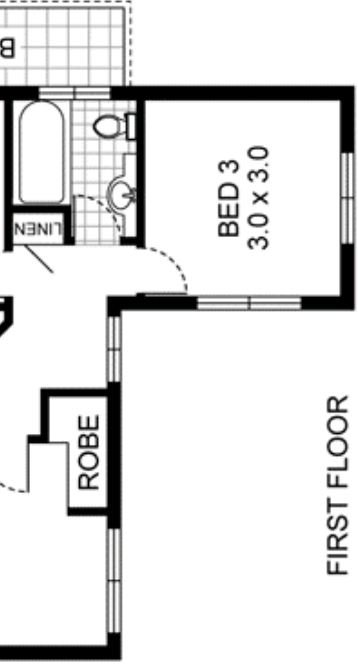


Harris Partners Real Estate

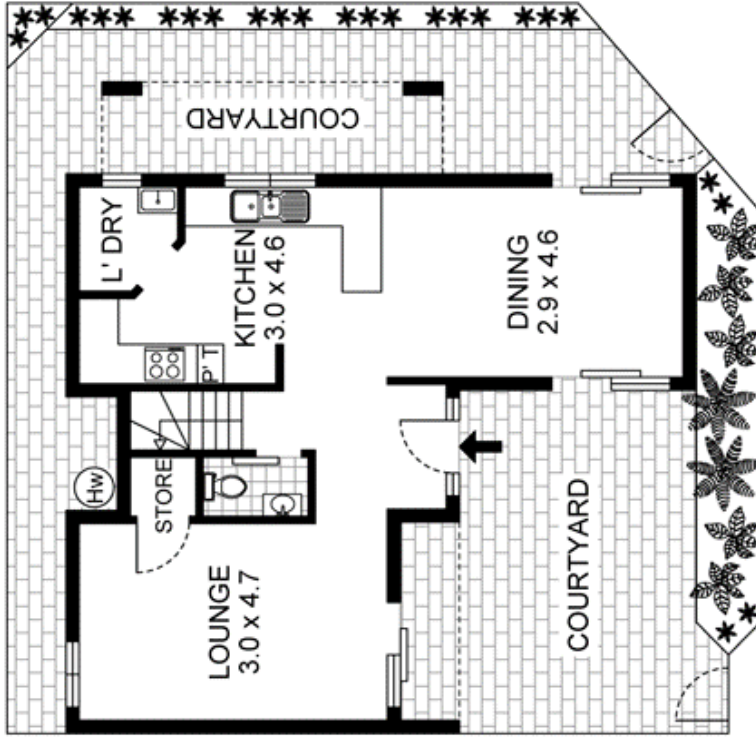
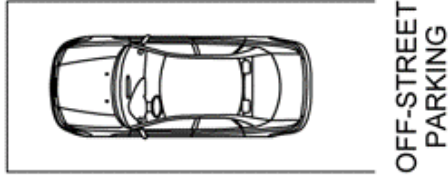
info@harrispartners.com.au

1300 42 77 47

<https://harrispartners.com.au>



FIRST FLOOR



GROUND FLOOR

7/9-11 Hathern Street, Leichhardt

PLEASE NOTE:
THIS PLAN HAS BEEN PROVIDED BY REALPHOTO FOR
MARKETING PURPOSES ONLY. NO RELIANCE SHOULD
BE PLACED ON THIS PLAN FOR CONSTRUCTION OR
DEMOLITION PURPOSES. REALPHOTO 0405 662 225
WWW.REALPHOTO.NET.AU