



## 37 Merton Street, Rozelle

### Architecturally designed residence in Rozelle village

Lovingly and extensively restored by the current owners with respect to its rich architectural heritage, this spacious tri-level semi (c1880) showcases the rustic warmth of recycled timber finishes and carefully sourced antique fittings and fixtures. Opened out to let in natural light and create a seamless flow to private, north-facing gardens, the home's upper levels capture striking views of the city skyline and beyond. **For more information please visit our website.**

4 | 1  
🛏️ | 🚿

**SOLD**

Sale Price - Confidential

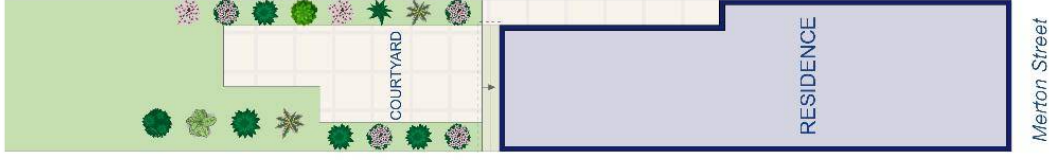
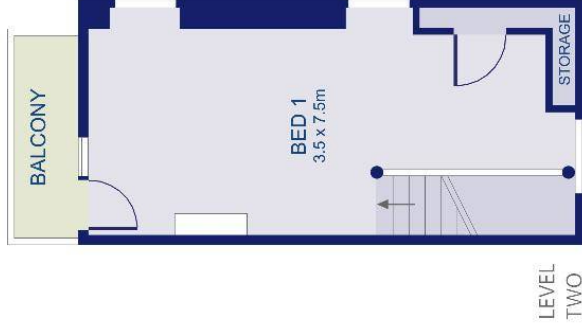
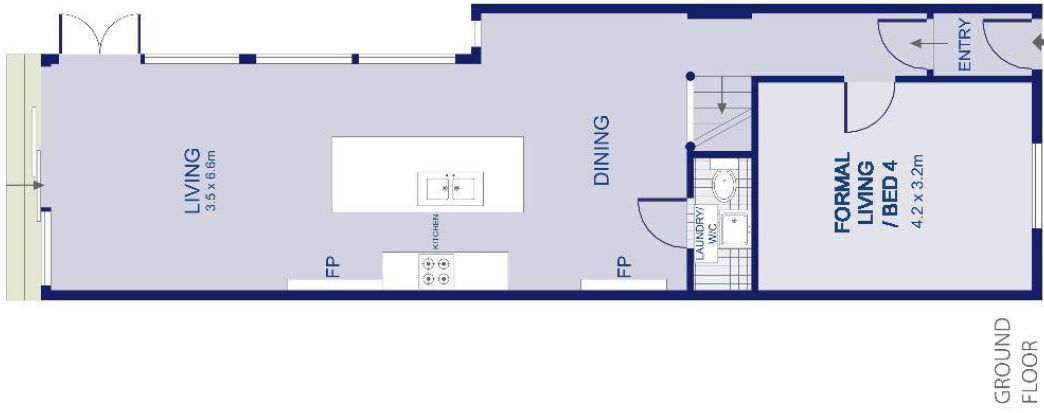


Harris Partners Real Estate

[info@harrispartners.com.au](mailto:info@harrispartners.com.au)

1300 42 77 47

<https://harrispartners.com.au>



APPROXIMATE AREAS	
Internal Floorpace	128sqm
External	88sqm

Merton Street



37 Merton Street  
**Rozelle**

DISCLAIMER: PLANS SHOWN ARE FOR PRESENTATION PURPOSES AND ARE NOT PART OF ANY LEGAL DOCUMENT. ALL MEASUREMENTS AND FIGURES ARE APPROXIMATE. THE VENDOR AND THE REAL ESTATE AGENT OR ANY RELATED ENTITIES MAKE NO WARRANTIES AS TO ITS ACCURACY AND ALL INTERESTED PARTIES MUST RELY ON THEIR OWN ENQUIRIES.

**HARRISPARTNERS**  
 a superior alternative